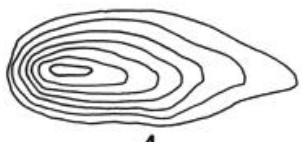
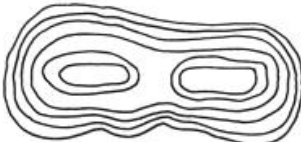
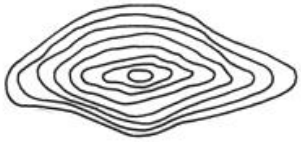
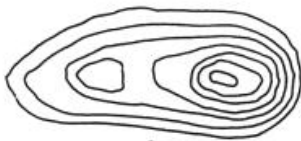
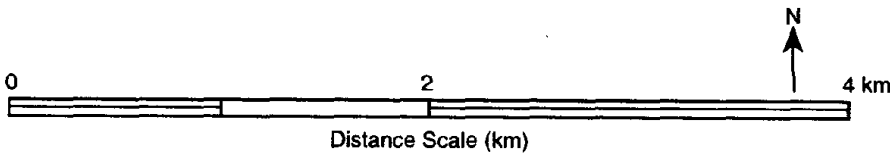


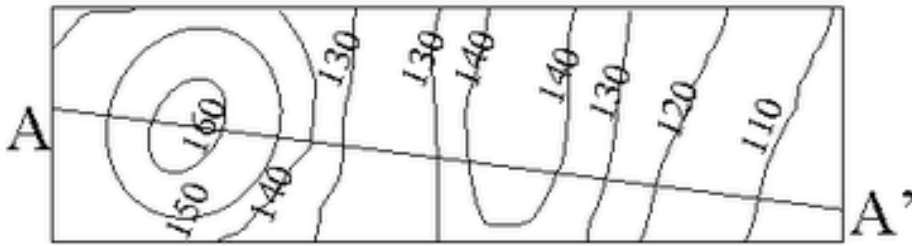
Measure the distance from point A to point B  
(Measured in kilometers, km)

\_\_\_\_\_

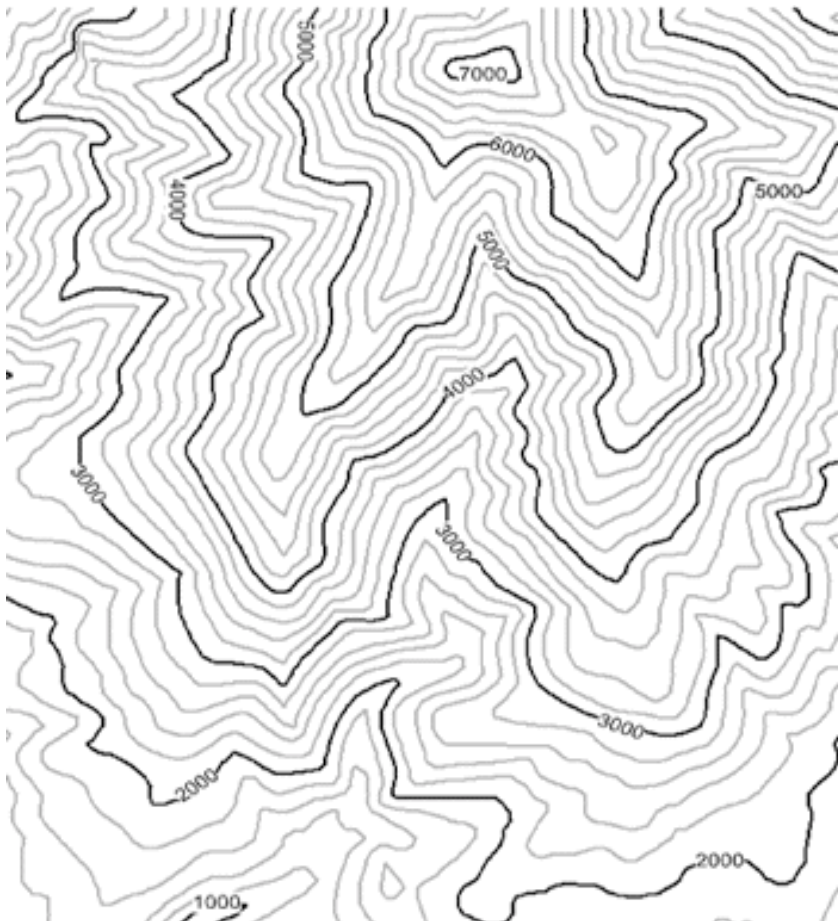
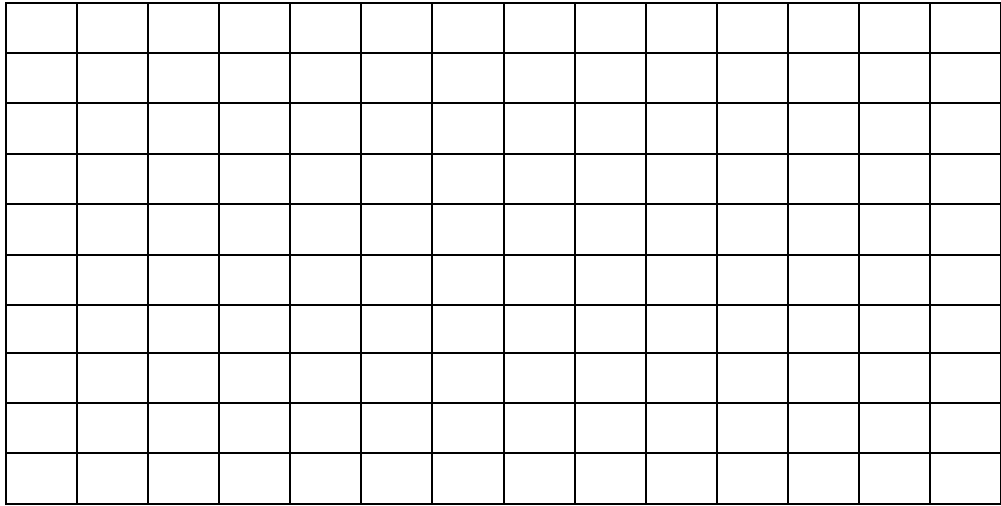


Match each of the topographic maps on the left with a picture of the profile of the land on the right.

- 1.
- 2.
- 3.
- 4.
- 5.
- 6.



Use the information in the topographic map to create a profile of the land on the graph.



- Use the information on the map to complete the following:
- Determine the contour interval of the map  
\_\_\_\_\_
  - Draw an arrow indicating the direction of water flow
  - Mark the top of any hills or mountains with an 'X'
  - Place a '☆' in an area with a steep slope
  - Circle an area with a gentle slope