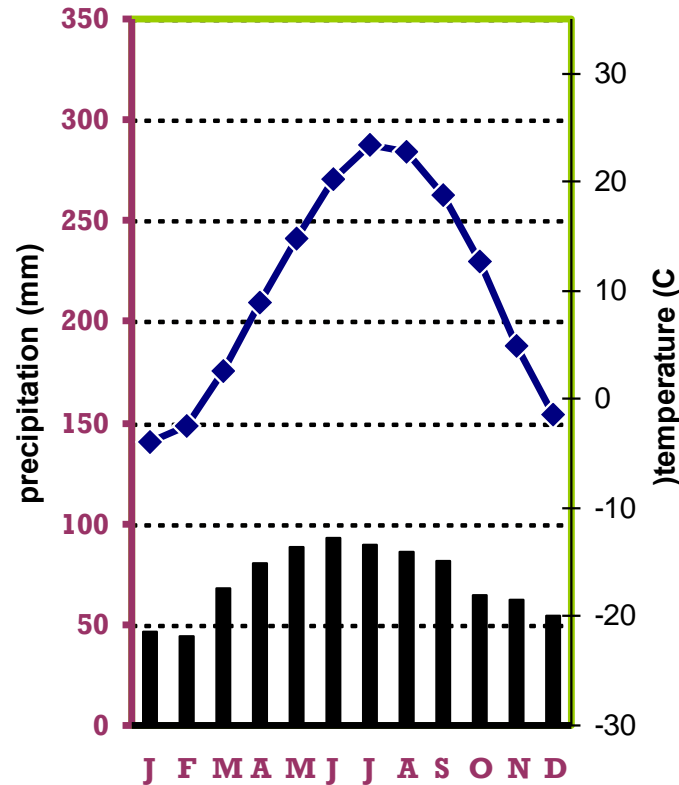


Interpreting & Analyzing Climatograms

Climograph for Chicago, Illinois



Unit 7

CLIMATE

- Uses *average* of precip & temp patterns over *extensive* period of time
 - Usually *~30 years* of data are used



Just as weather differs *daily*, climate
also differs from *place to place*

Seattle, WA

Cool
Moist

Houston, TX

Warm
Moist

Phoenix, AZ

Hot
Dry

Barrow, AK

Cold
Dry

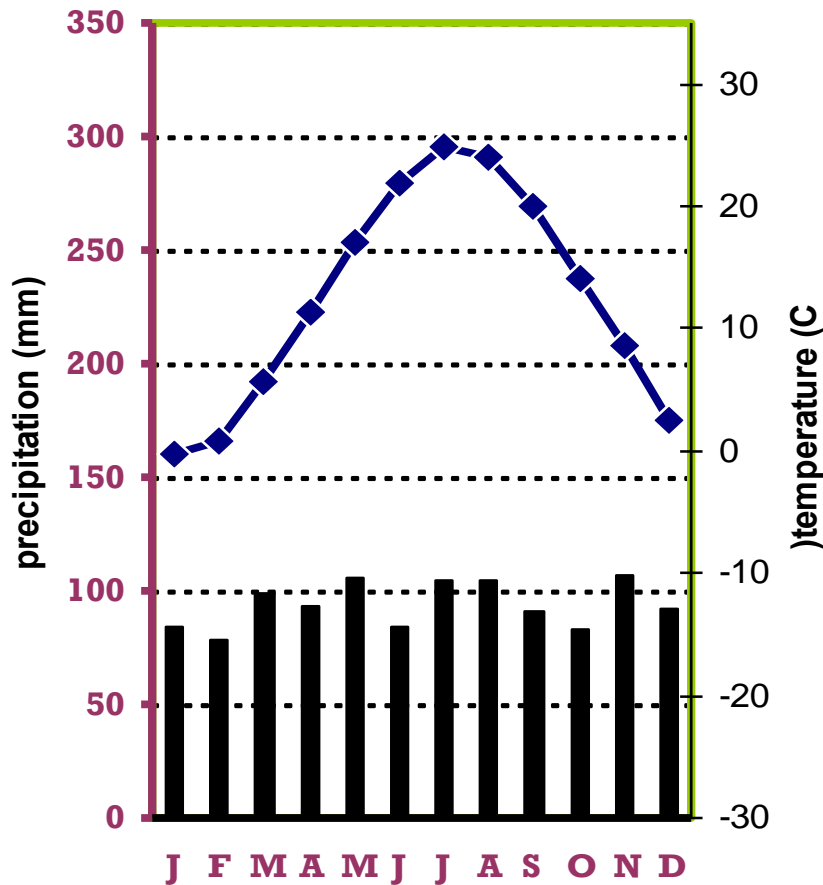
**YOU CONTROL
CLIMATE CHANGE.**



TURN DOWN. SWITCH OFF. RECYCLE. WALK. CHANGE

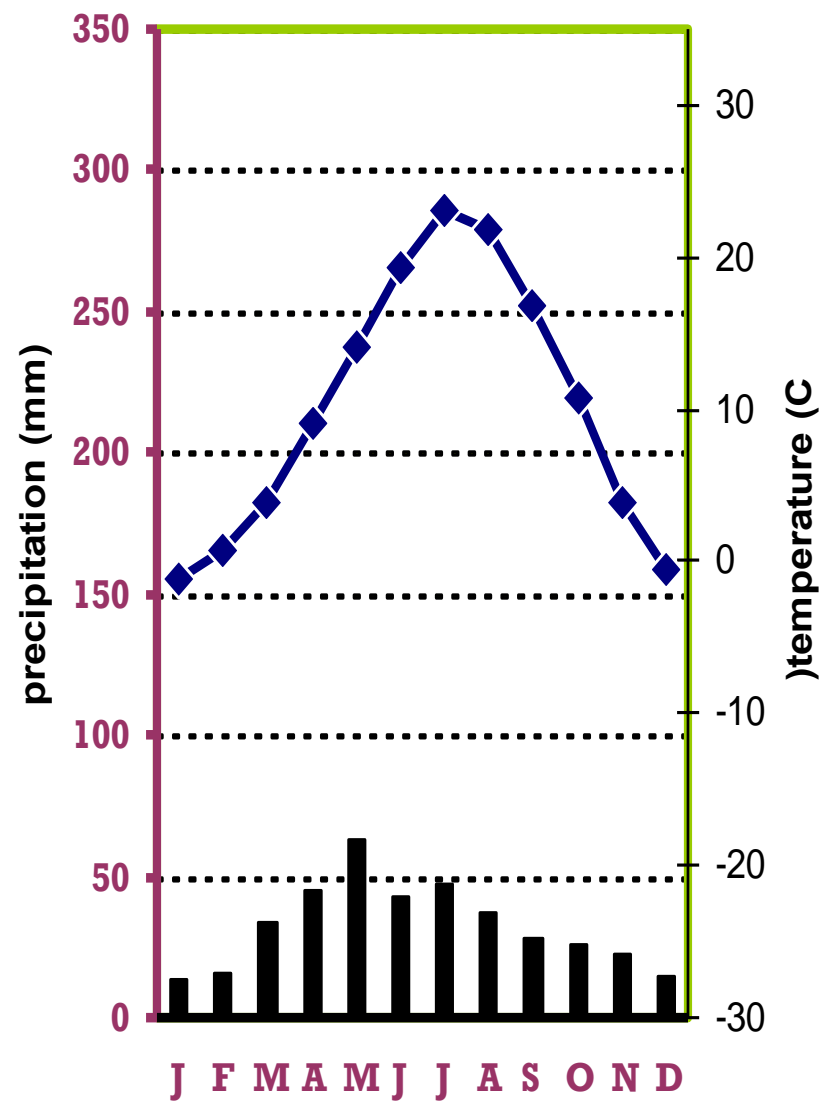
CLIMATOGRAMS

Climograph for New York, NY

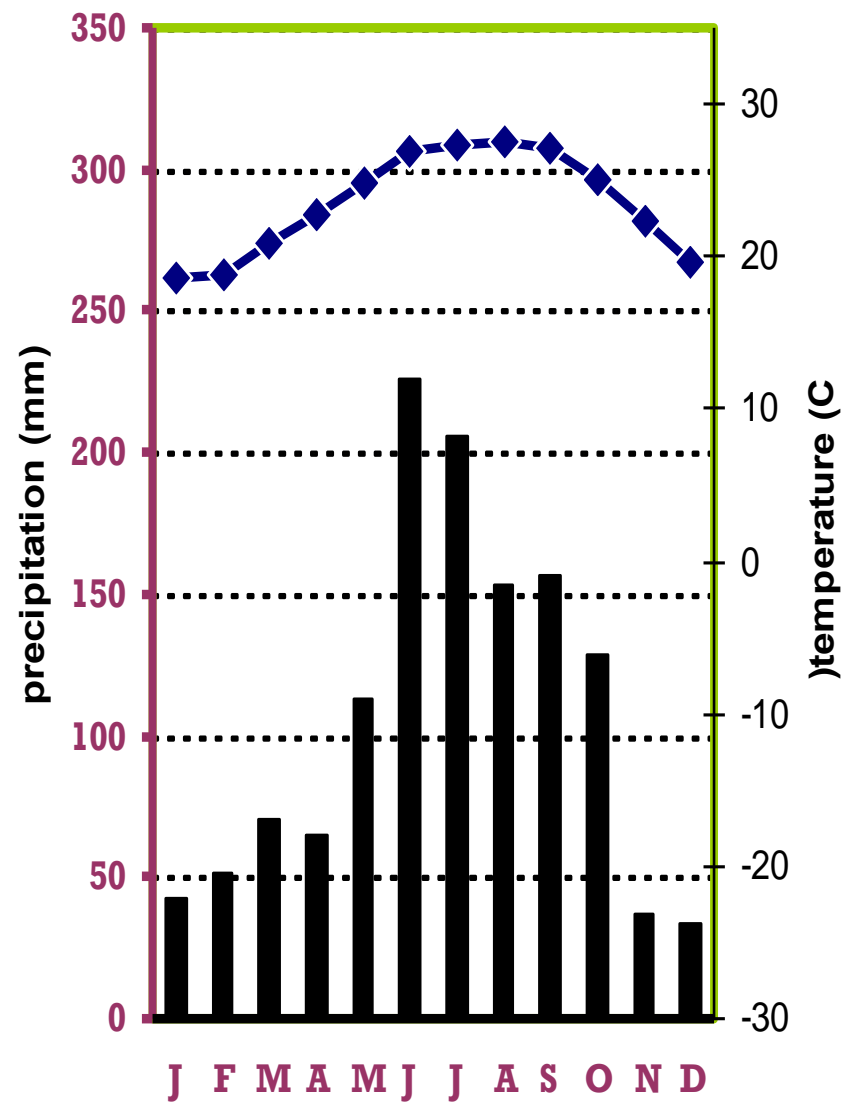


- Displays **annual average precip & temp** for any area
- Used to **compare** climate in different places

Climograph for Denver, CO



Climograph for Miami, FL

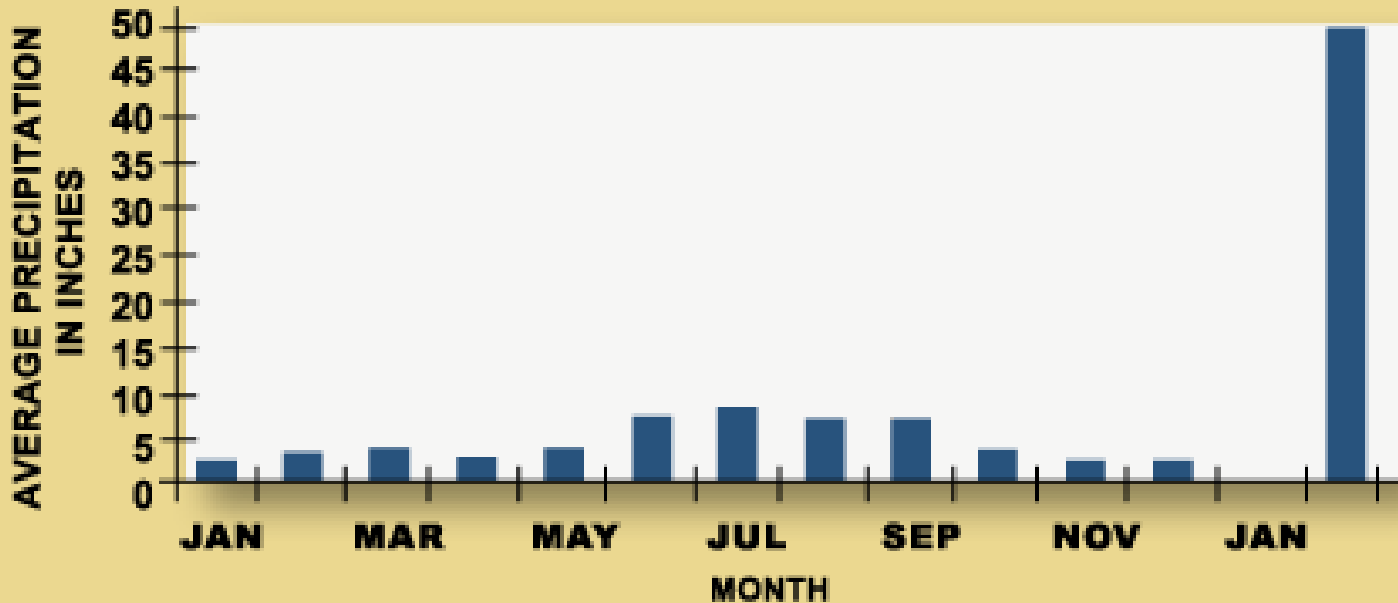


Graphing ANNUAL Average PRECIPITATION:

- *x-axis* = Months (Jan – Dec)
- **LEFT** *y-axis* = Average Precipitation (*inches / cm*)

	Jan	Feb	Mar	Apr	May	Jun	Jul	Aug	Sep	Oct	Nov	Dec	Year
Inch	2.1	2.9	3.4	2.4	3.3	6.8	7.8	6.6	6.5	3.1	2.1	2.1	49.1

AVERAGE PRECIPITATION IN ORLANDO, FLORIDA



— Average precipitation

Graphing ANNUAL Average TEMPERATURE:

- **RIGHT** *y-axis* = Average Temperature ($^{\circ}C / ^{\circ}F$)
- Place dot over month at avg temp listed & connect dots
- If Provided: **DO NOT** connect dot for yearly avg temp

	Jan	Feb	Mar	Apr	May	Jun	Jul	Aug	Sep	Oct	Nov	Dec	Year
$^{\circ}F$	59.9	61.9	66.6	71.4	77.2	81.1	82.4	82.4	81.0	74.8	67.5	61.9	72.3

AVERAGE TEMPERATURE IN ORLANDO, FLORIDA

